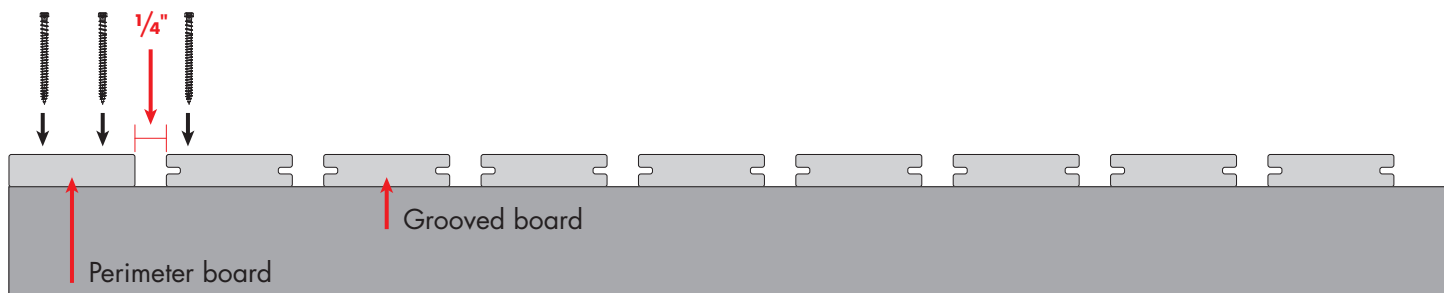


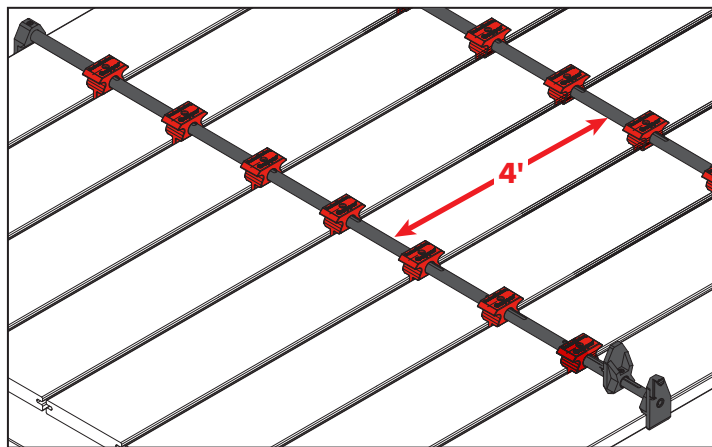
1) Stage Boards

- Pre-populate 8 grooved boards onto deck frame
- Ensure boards are loosely spaced apart

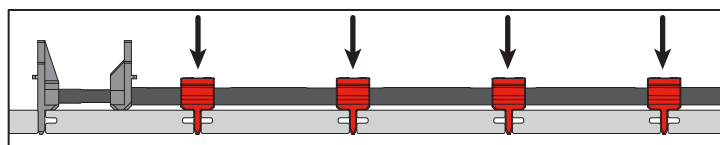
- Fasten first grooved board into position
- Ensure a 1/4" gap between perimeter board and fixed grooved board



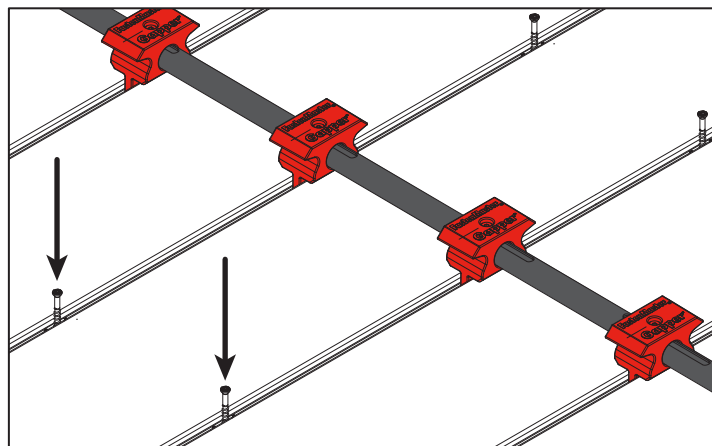
2) Insert Gapper



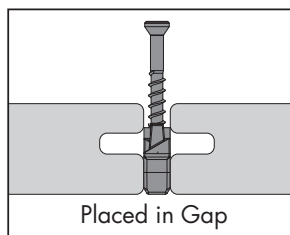
- Insert Gappers spaced a maximum of 4' apart across the length of the deck
- Do not place over joists
- Hand tighten the Gappers
- Do not clamp Gappers yet



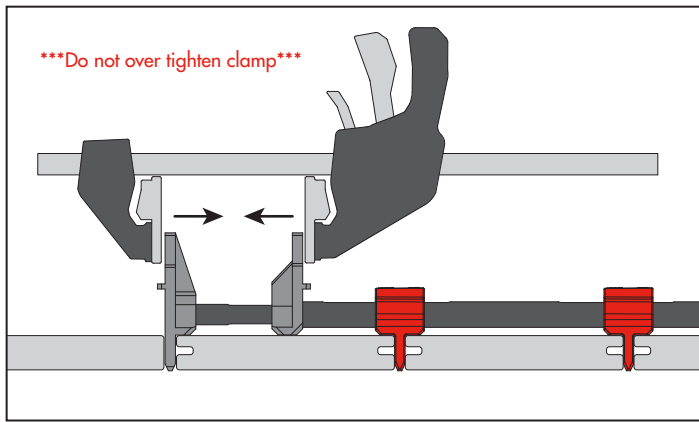
3) Place ZipCips



- Place ZipCips between grooved boards at each joist location
- Ensure clips are fully-seated to the joist
- Use additional spacers to expand gaps if needed.



4) Clamp Gappers

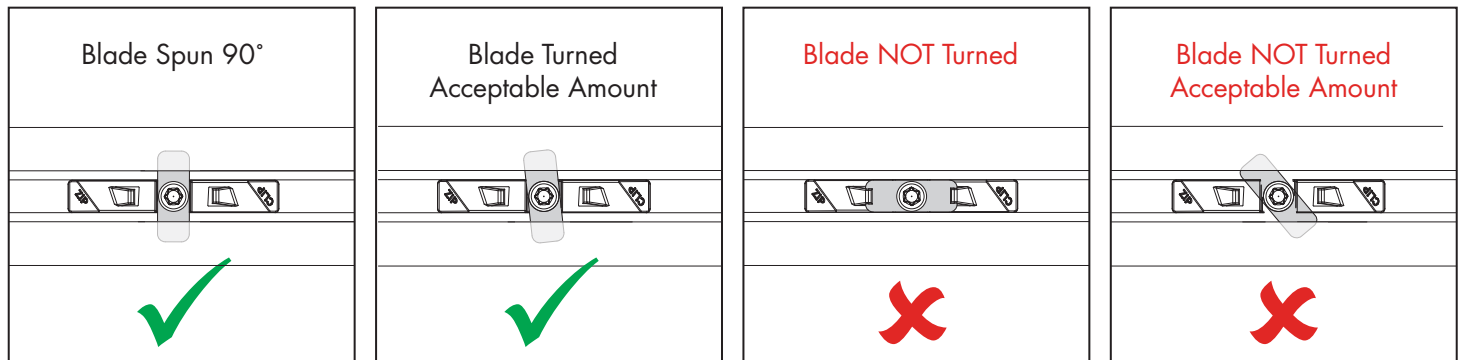


- Using bar clamps, evenly tighten each Gapper **Do not over-tighten**
- Gapper must be fully populated with boards to tighten properly
- Ensure proper gapping & board alignment after tightening

5) Ensure Proper Installation

A) Blade Rotation

- For proper installation, blades must rotate, dropping into holding channel & engaging board groove
- If blades have not properly rotated, remove ZipClip and reinstall/replace clip with drill



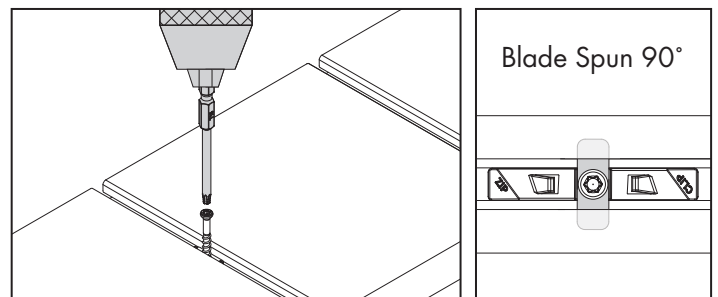
B) Drill Setting*

- Use variable speed clutch drill set to maximum speed
- Torque setting will vary between drills, use the lowest torque setting that causes blades to properly rotate
- On most drills, this is between 1/3 and 1/2 of maximum torque
- For example, if your drill has a maximum torque of 16, start with a torque setting between 6 and 8 and increase until proper blade rotation is achieved
- If the torque setting is too low, the blade will not rotate
- If the torque setting is too high, you risk damaging the driver bit

6) Drive Clips*

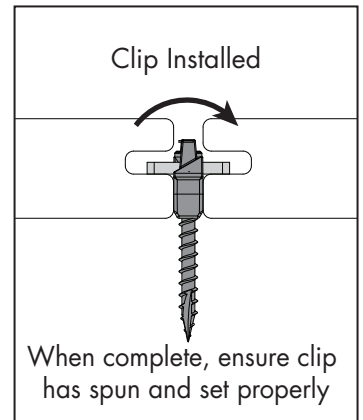
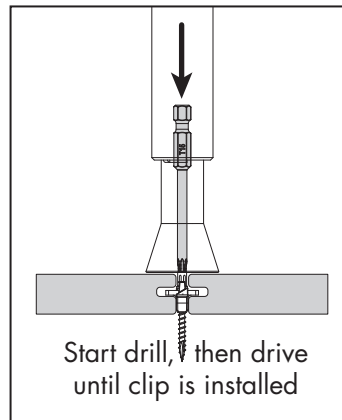
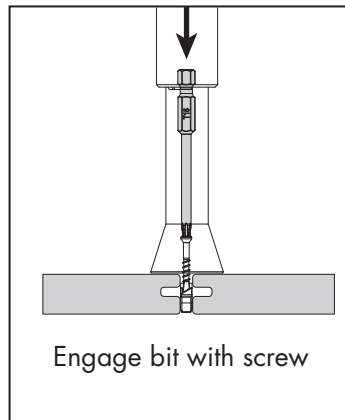
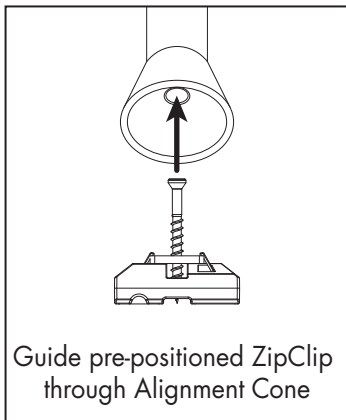
A) Hand Drive:

- Use a variable speed clutch drill and a T15 bit
- Drive ZipClips until all clip blades have spun into board grooves
- Ensure all blades have properly rotated



B) ZipStick:

- Align ZipStick cone over pre-placed ZipClips
- Stand on boards near the clip being installed, ensuring boards are seated fully to the deck frame
- Push down on handle, fully engage bit before driving. Do not start drill before bit is engaged.
- Drive ZipClips until all blades have spun into board grooves
- Ensure all blades have properly rotated



ZipStick Set Up

• Insert T15 Bit:

Pull back spring loaded holder, insert bit & release holder

• Attach Alignment Cone:

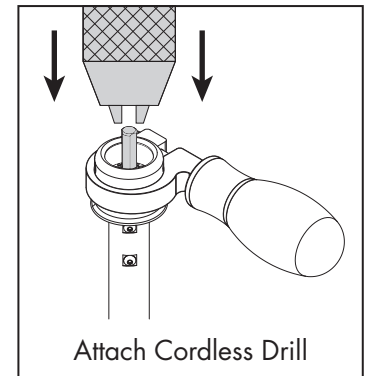
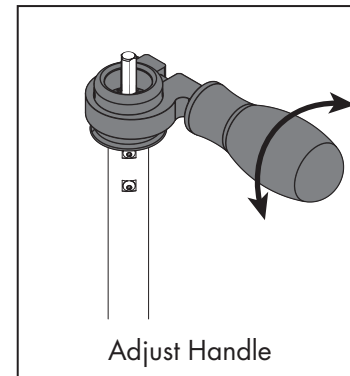
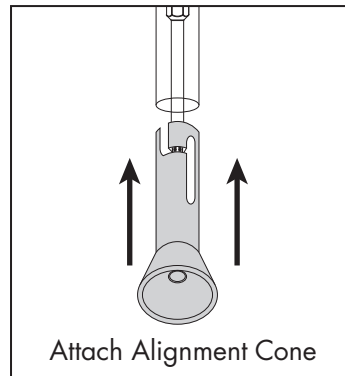
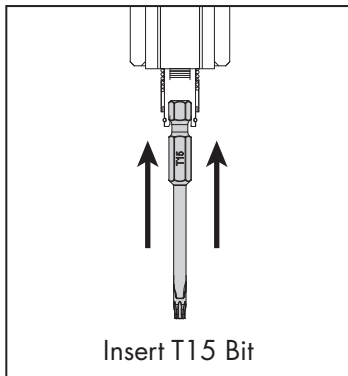
- Position alignment cone at bottom of ZipStick
- Align set screw with channels on cone
- Insert & twist to lock into place

• Attach Adjustable Handle:

Slide handle onto ZipStick, twist to tighten

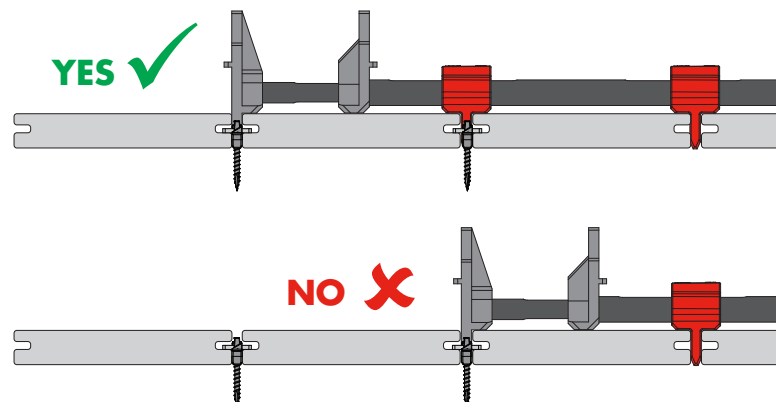
• Attach Drill

- Ensure drill is optimally set to drive ZipClips*
- Open drill chuck to fit over tool
- Insert ZipStick into drill without contacting collar
- Tighten chuck to secure drill



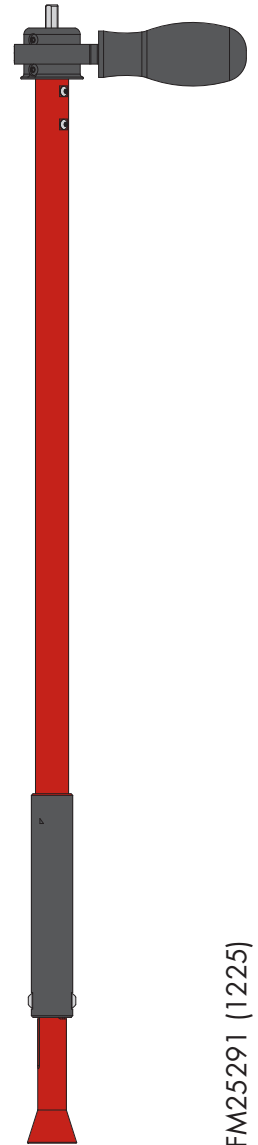
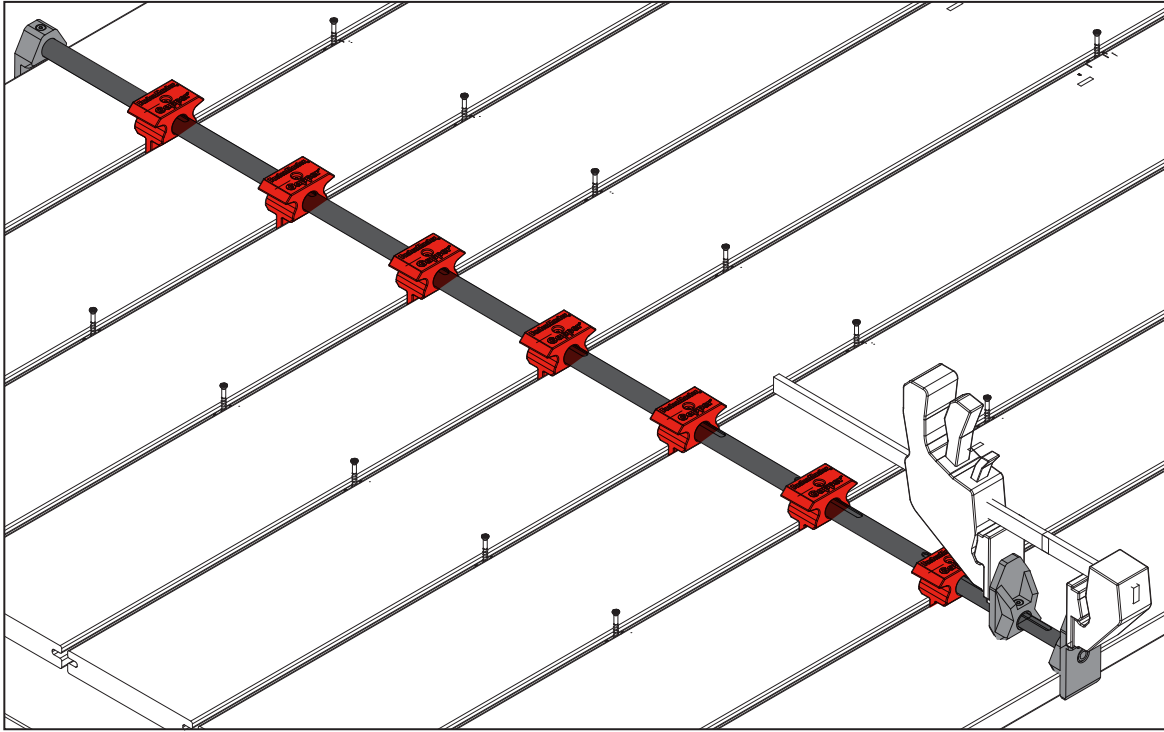
7) Fastening Additional Boards

- When first section of 8 boards is complete, remove Gappers and continue to the next section
- Ensure Gappers are hooked to a board that has clips fastened in BOTH grooves



FastenMaster Zip

Hidden Fastening System



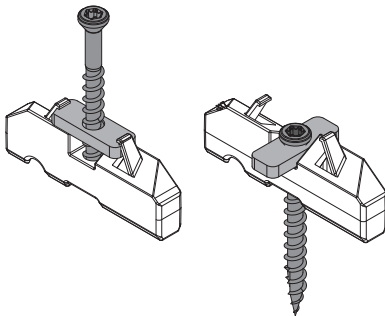
The Next Generation of Hidden Deck Fastening

 **FastenMaster**
Gapper™
Deck Board Spacer

 **FastenMaster**
ZipClip™
Hidden Deck Fastener

 **FastenMaster**
ZipStick™
Stand-Up Installation Tool

Blade spins 90°
during installation



Learn more about the
Zip Hidden Fastening System
installation & best practices



 **FastenMaster**
PRO Driven



FastenMaster.com 800-518-3569

FM25291 (1225)